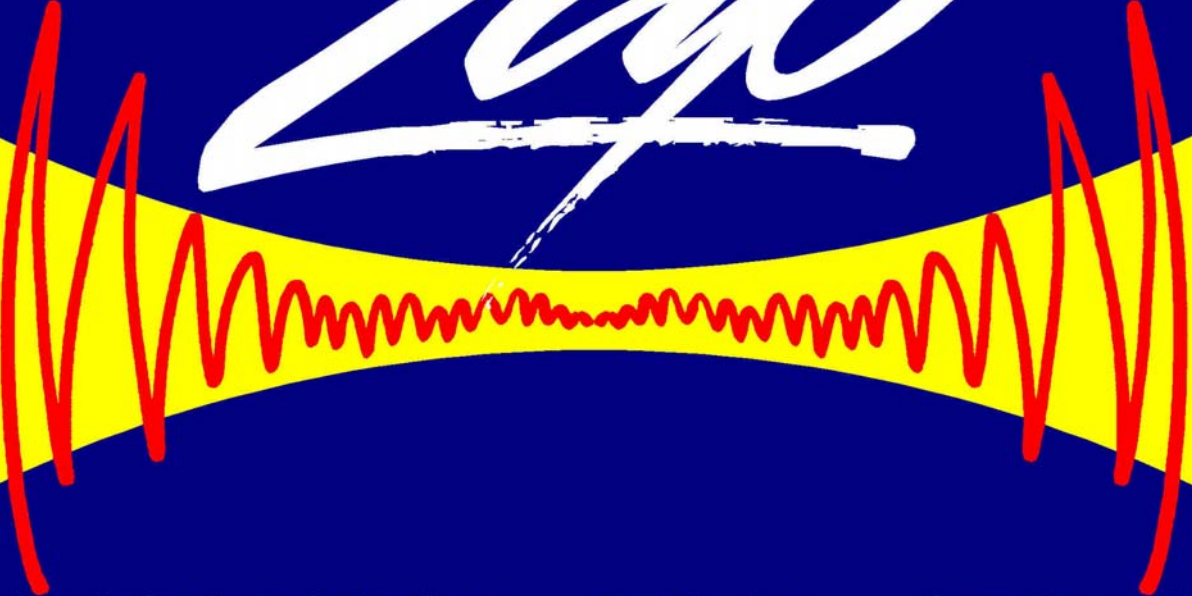


z90



COMPRESSION EMAIL SERVICE

Mobile Communicator
Windows XP
Installation and Configuration Guide

The following installation guide steps you through the set-up and configuration of the ZAP Email software. Before you begin please ensure you have the following software already installed:

Microsoft Windows 98/NT/2000/XP
Microsoft Outlook 97, 98, 2000, XP or 2003

Ensure that you have MS Outlook set to Corporate or Workgroup rather than
Internet Only.

Ensure that you are logged into an Admin Account on the computer

If you have any problems please contact our Support Dept. immediately. [+44 1493 441485](tel:+441493441485)



CD-ROM Install

- 2.1 Insert *Mobile Communicator* CD-ROM into CD drive.
- 2.2 The *Mobile Communicator* Installation program will now load. (If the Setup does not begin automatically please follow the below steps otherwise please continue to step 2.3)

Click '**Start**' button on bottom left of the Windows taskbar.

The Windows 98/NT/2000/XP '**Start Menu**' will now appear.

Click '**Run**'.

The Windows '**Run**' window will now appear.

Click '**Browse**'

The '**Browse**' window will now appear, in the '**Look In**' list box select: **Compact Disc (CD-ROM)**.

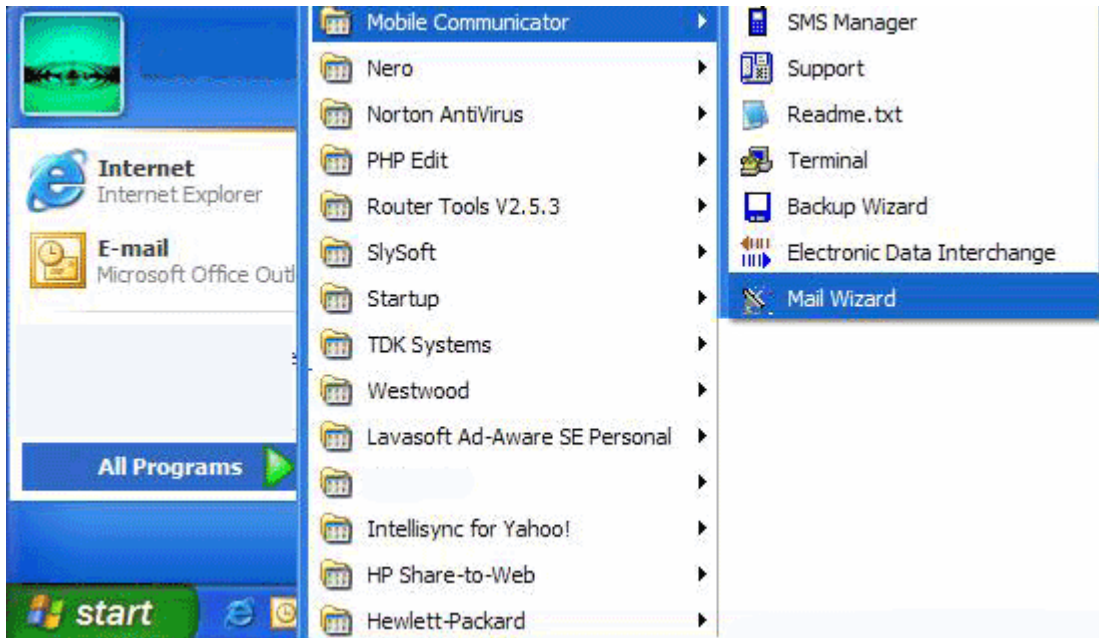
Select '**setup.exe**' and click '**Open**'.

Click '**OK**'

- 2.3 Click '**Yes**' to accept license agreement.
- 2.4 Click '**Next**' to accept default Install dir: **c:\program files\mobile communicator**
- 2.5 Click '**Next**' to accept Program Folder name: **Mobile Communicator**
- 2.6 The program files for *Mobile Communicator* will now be installed from CD-ROM
- 2.7 Click '**Finish**' when the install is complete to exit the Installation program.
- 2.8 Now your Computer will restart!

Step A

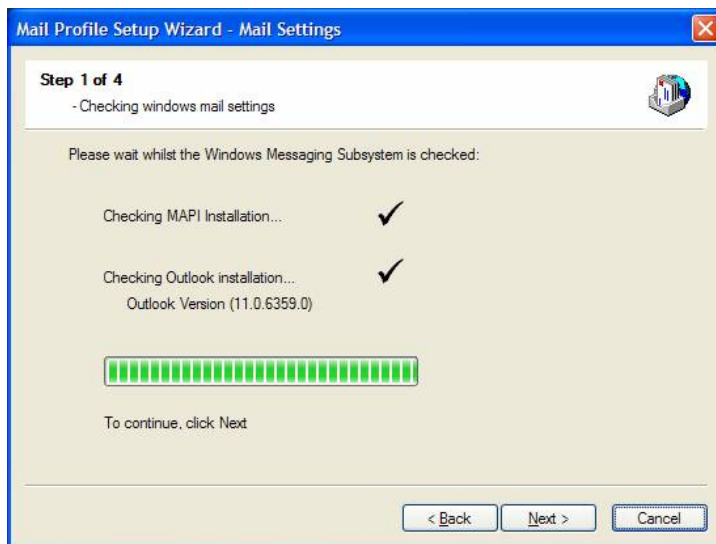
Now that you have installed MS Outlook and the Mobile Communicator you need to run the **“Mail Wizard”** to configure your system.



Click **“Start”** and follow the above to open the **“Mail Wizard”**

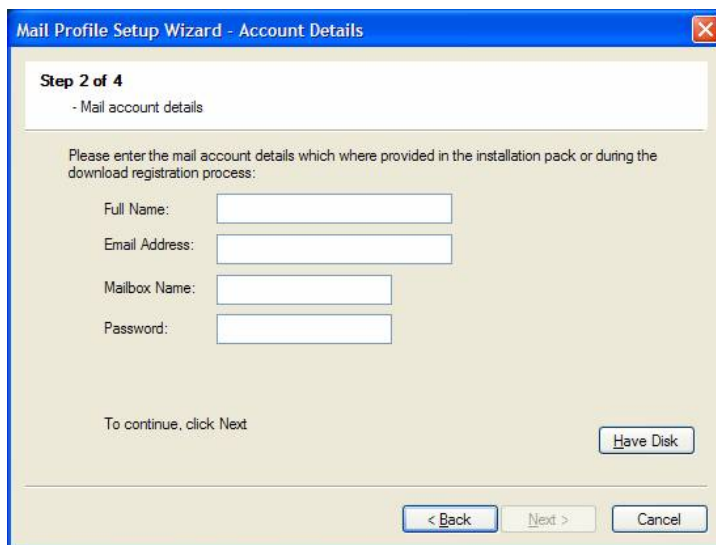


Follow the instructions in each window.

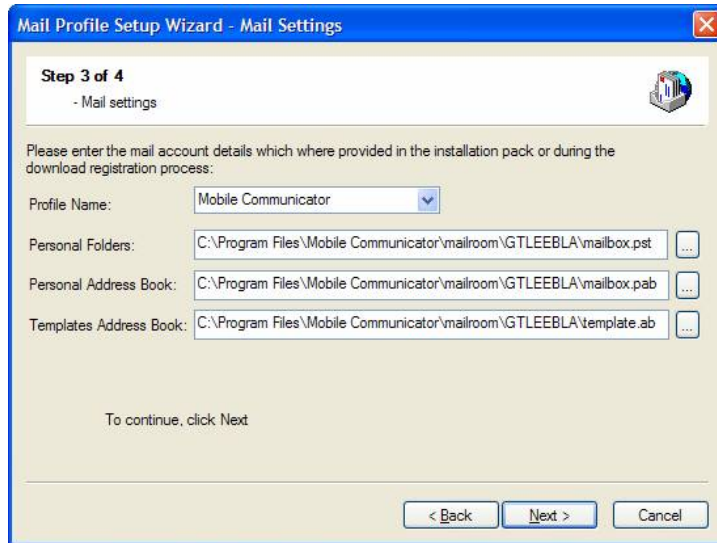


Click cancel if you do not have the disk and insert your details manually from the sheet provided with your CD.

Insert the Full Name, Mailbox Name (CAPITALS) and the Password (lower case)



The Profile Name is the name under which all your work will be stored and is the profile you will work under in MS Outlook.



The locations are correct and should not be changed.



When you click “**Finish**” in this window you are ready to use your system.

Now you can open MS Outlook and use the system to send telex, fax and e-mail over the satellite or GSM.

Step B

Making a Connection

Now that your system is installed, this final step of making a connection is very straightforward.

It is the simple process of setting up the connection so that your software will work over your specific hardware.

Once you have prepared your first message, if you are ready to transmit then simply click the “**Send/Receive**” button in the middle of the tool bar.



Upon pressing the “**Dial**” button in the first window, you will be asked if you would like to set up a connection.

Click “**Yes**” and follow the instructions on the screen. The software will detect what hardware is connected to each of your communication ports. It will then recommend which one to use, please check if this is the correct hardware that you are using and is the speed you would like to operate at. If you prefer another in the list then select it. Be aware, this speed is the PC to Hardware speed not the speed over the remote circuit.

Once you have completed this section your data is ready to transmit and will do so on pressing the final “**Dial**” button.

If the software is unable to detect your hardware, please check the connections and everything is switched on.

If the software is still unable to detect your hardware then press “**Next**” and select the hardware manually from the list provided. Starting with which Satellite system you are using and then the terminal.

Again, follow the screen instructions and you will end up as before, ready to press the final “**Dial**” button to instruct the software to send your data.

Please call support on +44 1493 441485 or e-mail Customer.Service@ast-uk.com if you have any questions.